

**Femco**  
NO-SPILL™ SYSTEMS

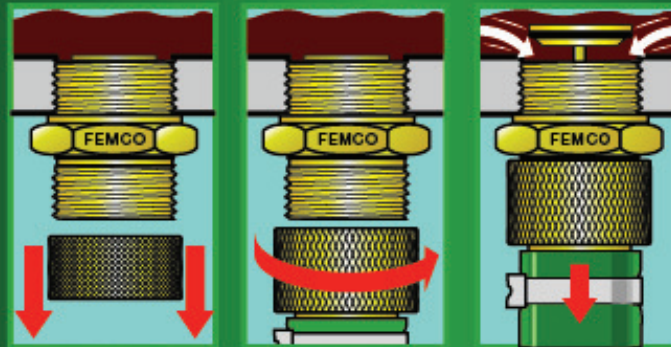
The Leader in Fluid Changing Technology

**Femco**  
NO-SPILL™ SYSTEMS

The old way...



It's as Easy as 1-2-3



1. REMOVE CAP

2. CONNECT

3. DRAIN

Fast, Clean, Safe,  
Hot Oil Draining

The No-Spill™ way



**Femco**  
NO-SPILL™ SYSTEMS

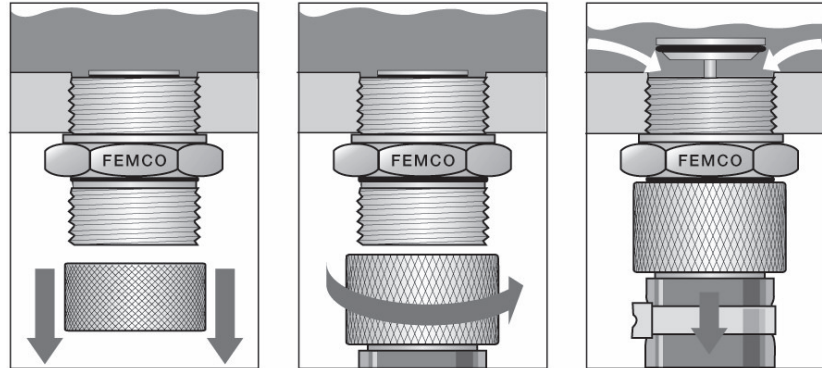
Eliminate Messy Oil Changes Forever

**Femco**  
NO-SPILL™ SYSTEMS

# How Do Femco No-Spill™ Systems Work?

Some Frequently Asked Questions About Femco No-Spill™ Systems

## Fluid Draining as Easy as 1 - 2 - 3



**1. Remove Cap**

**2. Connect**

**3. Drain**

### How do the drain plugs work?

Femco's patented draining design has a stainless steel, spring-loaded valve inside the drain plug. This valve remains closed until Femco's patented drainer is attached to the drain plug. Once the drainer seals itself, the valve opens and the oil begins to drain through the hose.

### Do I need a drainer for every vehicle?

No. The drainers are designed to fit all of the plugs within a series (i.e. one Large Straight Drainer fits all large bottom plugs in the Standard series).

### What series is correct for me?

The series depends on the application, and style of draining. Standard plugs are common where clearance is not an issue. Compact plugs are used where clearance is a concern. Speed Click plugs are very popular with all sizes of fleets.

### Does any oil get left in the pan?

No. Femco plugs are designed to sit flush with the pan. Therefore, all of the oil is drained quickly and easily.

### Can I drain the oil hot?

Absolutely. This is one of the main advantages of using Femco.

### Can I use a Suction System?.

All 3 Femco designs can drain by gravity or suction. Simply connect your suction system to one of our drainers and non-return valves.

### What if I can't find a size?

Femco makes over 500 combinations of thread sizes and patterns. Please call us with your application, and we will find the size for you.

### Is there a minimum order amount?

No. Femco customers and dealers can order as few or as many plugs as are required.

### What are the Shipping Terms?

Product is shipped FOB Origin. UPS Ground is the most common shipping method.

### How many of these drain plugs are in use?

There are over 1,000,000 in use in North America.

### What are the plugs made of?

The plugs are machined from solid brass bar stock.

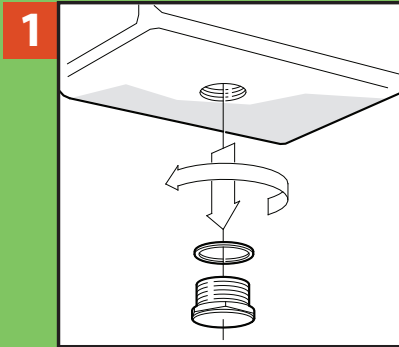
### What is the warranty for the drain plugs?

Femco plugs are guaranteed for life for workmanship and materials. See page XX for Warranty Information

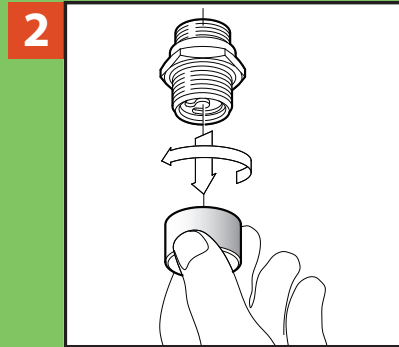
### Do I need to buy a dust cap with my drain plug?

No. Femco drain plugs come with a dust cap. Replacement dust caps and dust caps with chains are available for a fee.

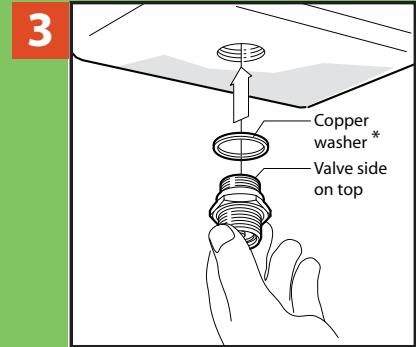
## Installing Femco® No-Spill Drain Plugs (Standard and Compact)



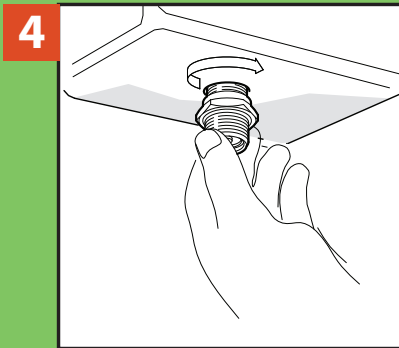
Remove existing drain plug and washer (or o-ring). Clean the threads in the oil pan. Ensure that the area around the drain plug hole is clean and free of debris.



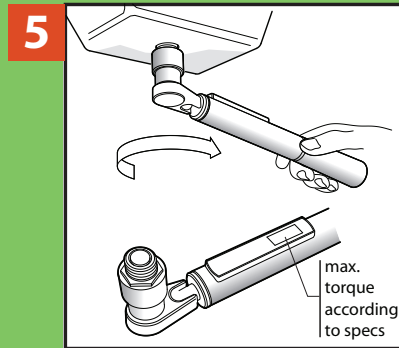
Remove Femco Drain Plug from container, and remove the dust cap.



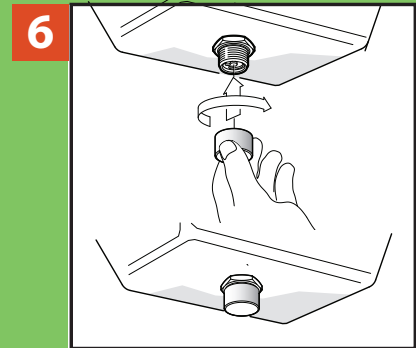
Ensure that the Copper Washer is seated on the valve side of the plug (i.e. the top of the plug). \* **Copper Washer is not required for plugs in NPT sizes.**



Thread the Femco Drain plug in by hand until snug against the pan. If you meet resistance, back the plug out and try again. **DO NOT FORCE** the plug into the hole.

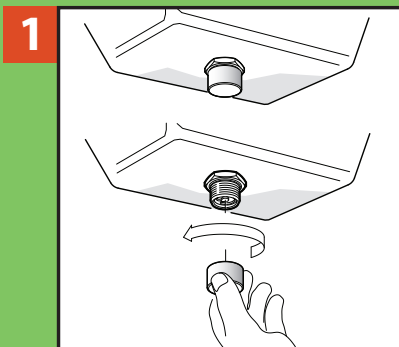


Use a Torque Wrench to tighten the Femco drain plug to the specifications on the container. **DO NOT** install without using a torque wrench.

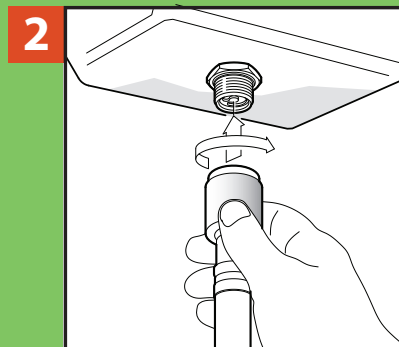


Screw the dust cap back on to the Femco drain plug (by hand)

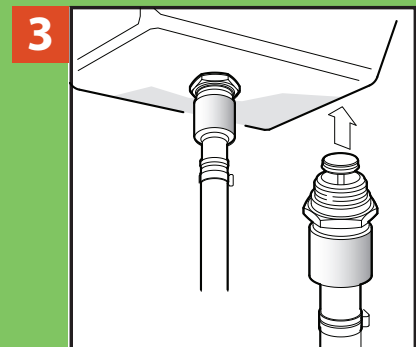
## How to Drain Your Oil (or other fluids)



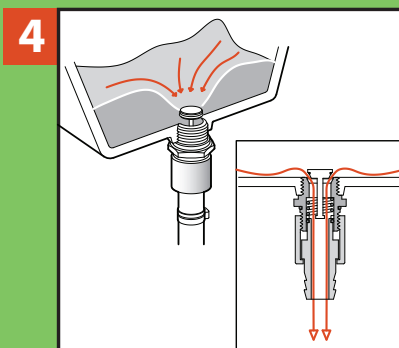
Warm up the engine to operating temperature. Turn off engine. Remove the dust cap from the Femco drain plug.



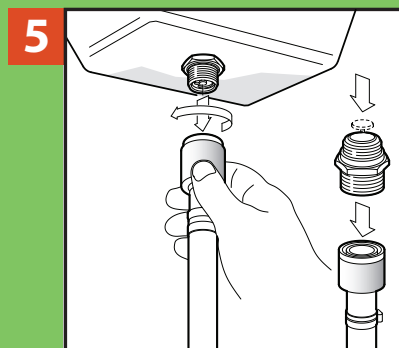
Thread the drainer on to the bottom of the Femco drain plug.



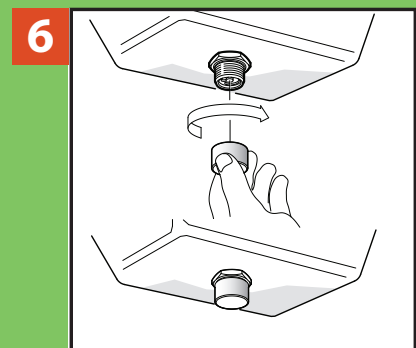
When the drainer is attached to the Femco drain plug, the valve will remain in the open position.



Oil or other fluid will flow freely.



Detach the drainer by unscrewing it from the Femco Drain plug. The valve will return to the "closed" position.



Screw the dust cap back on to the Femco drain plug (by hand).